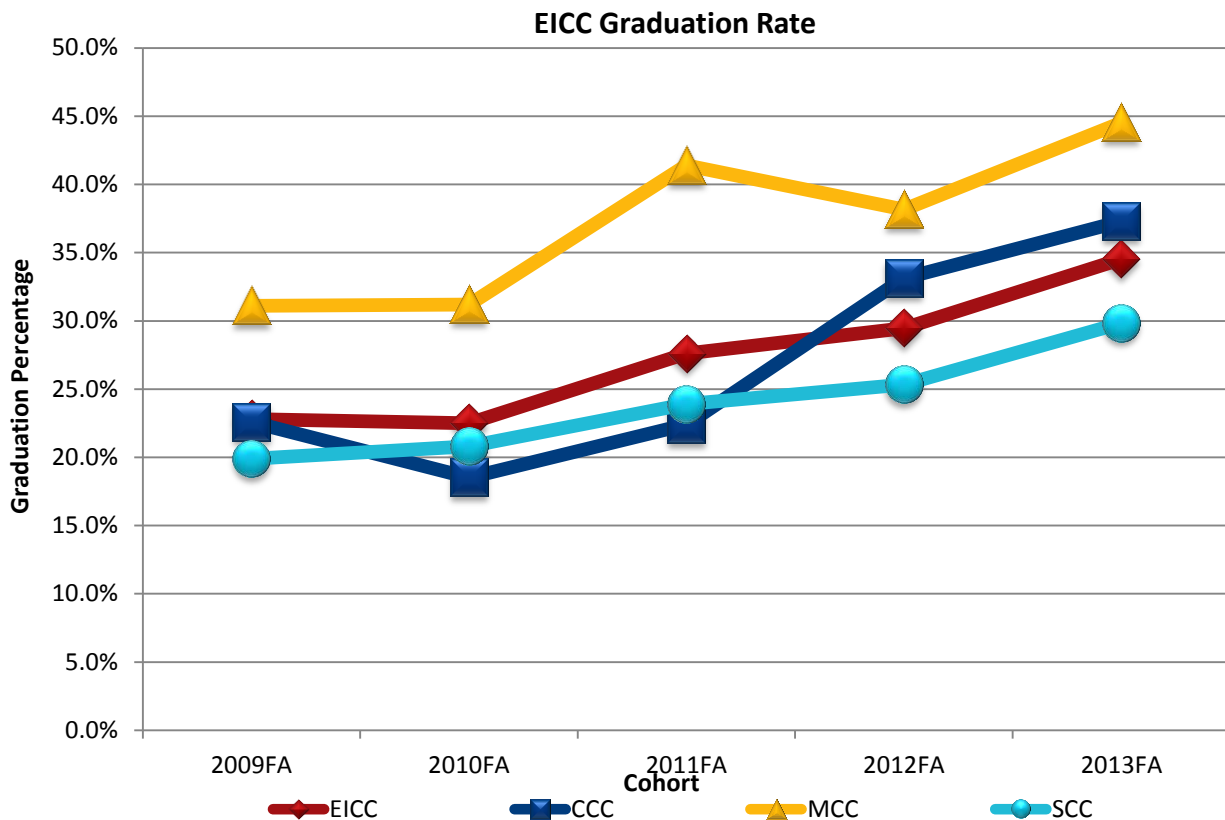


IPEDS Graduation and Persistence Data
Reported in Spring 2017 for the Fall 2013 Cohort

Graduation Rates

EICC’s overall reported graduation rate of this cohort was 34.5%, 5.0 points above the previous year’s 29.5%. This is the only rate reported to the U.S. Department of Education; for internal purposes, the rates per EICC college are calculated. The table and chart below shows the graduation rate reported for EICC as well as the internal calculations for Clinton Community College, Muscatine Community College and Scott Community College over the past five years.

Cohort Year	2009FA	2010FA	2011FA	2012FA	2013FA
Eastern Iowa Community Colleges	22.8%	22.5%	27.6%	29.5%	34.5%
Clinton Community College	22.6%	18.5%	22.4%	33.1%	37.3%
Muscatine Community College	31.1%	31.2%	41.4%	38.2%	44.5%
Scott Community College	19.9%	20.8%	23.9%	25.3%	29.8%



Appendix B shows the history of the IPEDS graduation rate for EICC and each of its colleges for the past 15 years. EICC’s highest graduation rate was 34.5% with the 2013FA cohort (reported in Spring 2017). CCC’s highest rate is the 37.3% reported this year with the 2013FA cohort (reported Spring 2017); MCC’s

highest rate is the 44.5% reported with this year with the 2013FA cohort (reported Spring 2017); SCC’s highest rate is tied at 29.8% with the 200FA cohort (reported Spring 2004) and the 2013FA cohort (reported Spring 2017).

Minority

Appendix C has a full breakout of this year’s graduation rates by gender and race/ethnicity, by college, including the specific year the first award was earned. Appendix D shows college-level detail by race/ethnicity.

The greatest increase in minority graduation rates was with Native American/Alaskan Native, increasing 46.7 points over the prior year with 66.7%. The only minority graduation rates that decreased in comparison to the prior year were Hawaiian/Pacific Islander, which decreased 50.0 points with 50.0% and Two or More Races, which decreased 7.2 points with 26.1%. The graduation rate for all minorities combined increased 7.8 points to 27.1%.

Cohort Year	2009FA	2010FA	2011FA	2012FA	2013FA
Native American/Alaskan Native	33.3%	28.6%	33.3%	20.0%	66.7%
Asian	38.9%	6.3%	21.4%	25.0%	66.7%
Black	8.7%	5.3%	6.6%	12.2%	21.1%
Hawaiian/Pacific Islander	0.0%	0.0%	0.0%	100.0%	50.0%
Hispanic, any race	21.7%	15.6%	26.0%	20.9%	24.7%
White	24.5%	24.8%	30.6%	30.6%	37.5%
Two or More Races	0.0%	20.0%	19.2%	33.3%	26.1%
Chose not to Reply/Unknown	18.3%	23.5%	48.1%	31.3%	38.1%
Nonresident Aliens	50.0%	65.6%	39.1%	78.6%	28.6%
All Minorities (1-5 and 7)	16.3%	11.1%	15.7%	19.3%	27.1%

Gender

Appendix C has a full breakout of this year’s graduation rates by gender and race/ethnicity, by college, including the specific year the first award was earned. Appendix E shows college-level detail by gender.

Male students continue to graduate at a higher rate than female students for the second consecutive year; the male students completed at 3.6 points higher than female students.

Cohort Year	2009FA	2010FA	2011FA	2012FA	2013FA
Male	21.6%	21.0%	26.0%	30.2%	36.3%
Female	23.8%	23.8%	29.2%	28.8%	32.7%

Straight from High School Students

Of the 325 “non-traditional” students in the cohort, 86 (26.5%) completed a program within three years. This is 1.7 points above the previous year’s 24.8%.

Of the 434 cohort students who graduated from high school in 2013, 176 (40.6%) completed a program within three years. This is 8.0 points above the previous year’s 32.6% and 14.1 points above students who graduated high school prior to 2013.

Of the 244 cohort students who graduated from high school in 2013 and earned hours while still in high school as a joint enrolled student, 114 (46.7%) completed a program within three years. This is 8.7 points above the previous year’s 38.0%, 6.1 points above 2013 high school graduates overall, 14.1 points above 2013 high school graduates without joint enrollment and 20.2 points above “non-traditional” cohort students.

Cohort Year	2009FA	2010FA	2011FA	2012FA	2013FA
Overall	22.8%	22.5%	27.6%	29.5%	34.5%
Graduated HS > Prior Spring	19.0%	17.5%	18.3%	24.8%	26.5%
Prior Spring HS Grads	25.8%	26.6%	34.7%	32.6%	40.6%
Prior Spring HS Grads with Joint Enrollment	36.8%	33.8%	41.9%	38.0%	46.7%

Developmental Education

Reading

There were 242 students in the IPEDS cohort who placed into Developmental Reading. This represents 31.9% of the students in the cohort. The following table shows the graduation rate for students based on their placement into Developmental Reading. Students who were not tested may have not been tested because they already had coursework in high school that was beyond the level to require testing or because they were in a Career & Technical Education (CTE) program that did not require reading placement.

Reading Placement	Cohort	# Grads	Grad Rate
Not Tested	73	35	47.9%
College-Level	444	163	36.7%
Placed One Level Below	161	47	29.2%
Placed Two Levels Below	81	17	21.0%

English

There were 231 students in the IPEDS cohort who placed into Developmental English. This represents 30.4% of the students in the cohort. The following table shows the graduation rate for students based on their placement into Developmental English. Students who were not tested may have not been tested because they already had coursework in high school that was beyond the level to require testing or because they were in a Career & Technical Education (CTE) program that did not require English placement.

English Placement	Cohort	# Grads	Grad Rate
Not Tested	81	38	46.9%
College-Level	447	158	35.3%
Placed One Level Below	167	55	32.9%
Placed Two Levels Below	64	11	17.2%

Math

There were 548 students in the IPEDS cohort who placed into Developmental Reading. This represents 72.2% of the students in the cohort. The following table shows the graduation rate for students based on their placement into Developmental Math. Students who were not tested may have not been tested because they already had coursework in high school that was beyond the level to require testing or because they were in a Career & Technical Education (CTE) program that did not require math placement.

Math Placement	Cohort	# Grads	Grad Rate
Not Tested	67	31	46.3%
College-Level	144	67	46.5%
Placed One Level Below	63	33	52.4%
Placed Two Levels Below	230	74	32.2%
Placed Three Levels Below	255	57	22.4%

Online Enrollment Type

Three different delivery method groups were identified: students only taking traditional, face-to-face classes, known as **Classroom Only**; students taking traditional, face-to-face classes and online classes, known as **Online & Classroom**; and students only taking online courses, known as **Online Only**. Students were placed into one of these three categories dependent on their online enrollment type in their first term, 2013FA.

Online Enrollment Type	Cohort	# Grads	Grad Rate
Classroom Only	604	206	34.1%
Online & Classroom	114	47	41.2%
Online Only	41	9	22.0%

Graduation Data by Program

The data by program refers to the student’s program in the Fall 2013 term compared to the program they received an award in. The largest EICC program in the cohort was Liberal Arts, with 446 students (adjusted for exclusions). An award in Liberal Arts was received by 132 of these students (29.6%) within three years, and an award from EICC was received by 149 of these students (33.4%) within three years. This means 17 of the students who started in Liberal Arts (3.8%) graduated from a CTE program rather than from Liberal Arts.

The total number of students enrolled in a Career & Technical Education (CTE) program in the cohort was 311. An award was received by 113 of those students within three years, representing an overall CTE graduation rate of 36.3%. Nine students who started in a CTE program received a degree in Liberal Arts and 104 students received an award in a CTE program; however, eight of the 104 students receiving an award in a CTE program received their award in a different CTE program than the program they were enrolled in at the beginning of the three years.

The table below shows the program graduation and the EICC graduation for each starting program. Twenty-one programs had a program graduate rate higher than the district rate of 34.5% (bolded in the far right column, below). The highest graduation rates were Electroneurodiagnostic Technology, Logistics, Manufacturing Maintenance and Mechatronics with a 100.0% program graduation rate. Seven

programs had no graduates from the IPEDS cohort within three years. These seven programs accounted for 32 students (4.2% of the cohort). Five of these students from four of these programs did change programs and achieve an award within three years.

Program	Number In Cohort	Program Grads ¹	Program Grad Rate	Cohort Grads ²	EICC Grad Rate
Accounting Management	5	2	40.0%	3	60.0%
Administrative & Office Support	6	5	83.3%	5	83.3%
Agribusiness Management	7	6	85.7%	6	85.7%
ASL-English Interpreting	7	1	14.3%	1	14.3%
Auto Collision Repair Technology	9	6	66.7%	6	66.7%
Automotive Technology	18	9	50.0%	10	55.6%
Business Management	25	8	32.0%	9	36.0%
Cancer Information Management	6	1	16.7%	1	16.7%
CNC Machining	5	1	20.0%	1	20.0%
Culinary Arts	18	4	22.2%	5	27.8%
Dental Assisting	12	5	41.7%	5	41.7%
Diesel Technology	16	8	50.0%	8	50.0%
Early Childhood Education	11	3	27.3%	3	27.3%
Electroneurodiagnostic Technology	1	1	100.0%	1	100.0%
Emergency Medical Services	5	3	60.0%	3	60.0%
Engineering Technology	2	1	50.0%	1	50.0%
Environmental, Health & Safety	3	2	66.7%	2	66.7%
Farm Management	5	2	40.0%	2	40.0%
Graphic Arts	3	0	0.0%	0	0.0%
Health Information Technology	5	1	20.0%	1	20.0%
Heating, Ventilation & Air Conditioning	10	7	70.0%	7	70.0%
Hospitality Management	3	0	0.0%	1	33.3%
Information Technology	23	5	21.7%	7	30.4%
Liberal Arts ³	448	132	29.6%	149	33.4%
Logistics	2	2	100.0%	2	100.0%
Manufacturing Maintenance	1	0	0.0%	1	100.0%
Mechanical Design Technology	5	3	60.0%	4	80.0%
Mechatronics	2	2	100.0%	2	100.0%
Nursing - LPN	11	0	0.0%	1	9.1%
Nursing - RN	49	1	2.0%	5	10.2%
Physical Therapy Assistant	3	0	0.0%	0	0.0%
Radiologic Technology	11	1	9.1%	1	9.1%
Surgical Technology	1	0	0.0%	0	0.0%
Technical Studies	1	0	0.0%	0	0.0%
Veterinary Technology	3	1	33.3%	2	66.7%
Welding Technology	8	5	62.5%	5	62.5%
Reciprocal Programs					
BHC-Equine Science	1	0	0.0%	0	0.0%
BHC-Law Enforcement	2	0	0.0%	0	0.0%
BHC-Massage Therapy	1	0	0.0%	0	0.0%

Program	Number In Cohort	Program Grads ¹	Program Grad Rate	Cohort Grads ²	EICC Grad Rate
CSC-Dental Hygiene	5	0	0.0%	2	40.0%
EICC Totals	759	228	30.1%	262	34.6%

¹ Program Grads are the number of students who graduated in the program they began in when the cohort was formed.

² Cohort Grads are the number of students who graduated in the starting program or in a different program than what they were in when the cohort was formed.

³ Cohort for Liberal Arts contains two exclusions; percentages reflect the exclusions.

Persistence Data by Program

In addition to graduation rate, persistence of non-graduates is also reported to IPEDS. In this cohort, 495 of the students did not achieve any academic award in the three years tracked. Of these students, 62 (12.5%) of non-graduates were enrolled in the 2016FA term, showing persistence toward an academic award; and 38 (7.7%) of them were still persisting toward their original academic award.

The following table breaks the persistence out by program, first showing students enrolled in 2016FA in the same program as their starting program and then showing students enrolled at EICC in the same or a different program.

The program with the highest persistence rate is Nursing-RN with 18.2% of students still pursuing a Nursing-RN degree and 18.8% of students still pursuing a degree at EICC, followed by ASL-English Interpreting at 16.7% for program and EICC persistence and then Culinary Arts with a 15.4% program and 23.1% EICC persistence rate. Twenty-nine programs have a 0.0% program persistence rate, and 27 programs have an EICC persistence rate of 0.0%.

Of the 299 students who began in Liberal Arts and did not receive an award, 33 were still enrolled with EICC in the Fall 2016 term, representing an 11.1% persistence rate. Nine of these students had changed to CTE programs.

Of the 198 students who began in a CTE program and did not receive an award, 29 were still enrolled with EICC in the Fall 2016 term, representing a 14.6% persistence rate. Fifteen of these students, however, were not enrolled in the same program they started in.

Program	Non-Grads	Still in Program 2016FA	Program Persistence Rate	Still at EICC 2016FA	EICC Persistence Rate
Accounting Management	2	0	0.0%	0	0.0%
Administrative & Office Support	1	0	0.0%	0	0.0%
Agribusiness Management	1	0	0.0%	0	0.0%
ASL-English Interpreting	6	1	16.7%	1	16.7%
Auto Collision Repair Technology	3	0	0.0%	0	0.0%
Automotive Technology	8	0	0.0%	0	0.0%
Business Management	16	1	6.3%	3	18.8%
Cancer Information Management	5	0	0.0%	0	0.0%
CNC Machining	4	0	0.0%	0	0.0%
Culinary Arts	13	2	15.4%	3	23.1%
Dental Assisting	7	0	0.0%	0	0.0%
Diesel Technology	8	0	0.0%	0	0.0%
Early Childhood Education	8	0	0.0%	0	0.0%

Program	Non-Grads	Still in Program 2016FA	Program Persistence Rate	Still at EICC 2016FA	EICC Persistence Rate
Electroneurodiagnostic Technology	0	NA	NA	NA	NA
Emergency Medical Services	2	0	0.0%	0	0.0%
Engineering Technology	1	0	0.0%	0	0.0%
Environmental, Health & Safety	1	0	0.0%	0	0.0%
Farm Management	3	0	0.0%	0	0.0%
Graphic Arts	3	0	0.0%	0	0.0%
Health Information Technology	4	0	0.0%	0	0.0%
Heating, Ventilation & Air Conditioning	3	0	0.0%	0	0.0%
Hospitality Management	2	0	0.0%	0	0.0%
Information Technology	16	1	6.3%	3	18.8%
Liberal Arts ³	299	24	8.1%	33	11.1%
Logistics	0	NA	NA	NA	NA
Manufacturing Maintenance	0	NA	NA	NA	NA
Mechanical Design Technology	1	0	0.0%	0	0.0%
Mechatronics	0	NA	NA	NA	NA
Nursing - LPN	10	0	0.0%	1	10.0%
Nursing - RN	44	8	18.2%	14	31.8%
Physical Therapy Assistant	3	0	0.0%	0	0.0%
Radiologic Technology	10	1	10.0%	3	30.0%
Surgical Technology	1	0	0.0%	0	0.0%
Technical Studies	1	0	0.0%	0	0.0%
Veterinary Technology	1	0	0.0%	0	0.0%
Welding Technology	3	0	0.0%	0	0.0%
Reciprocal Programs					
BHC-Equine Science	1	0	0.0%	0	0.0%
BHC-Law Enforcement	2	0	0.0%	1	50.0%
BHC-Massage Therapy	1	0	0.0%	0	0.0%
CSC-Dental Hygiene	3	0	0.0%	0	0.0%
EICC Totals	497	38	7.7%	62	12.5%

IPEDS Comparisons to other Community Colleges

IPEDS shares reported data from institutions; however, the latest available data was reported in Spring 2016 for the Fall 2012 cohort. EICC's reported graduation rate for that year was 29.5%. Seven of Iowa's community colleges had a graduation rate lower than EICC (shaded in the table on the next page).

The highest graduation rate amongst Iowa community colleges for the latest available year was at Northwest Iowa Community College, reporting 56.1%.

The statewide graduation average for the latest available year was 28.2%. EICC was 1.3 points above the average. The median graduation rate was 30.6%.

When compared with geographically-close Illinois community colleges, EICC performed 2.6 points higher than Black Hawk College and 2.9 points higher than Carl Sandburg College, but was below Highland Community College and Sauk Valley Community College.

The table on the following page shows the latest available data for graduation rates for each Iowa community college as well as the geographically-closest Illinois community colleges.

Institution Name	Fall 2010 Cohort	Reported Grads 2014	FY14 IPEDS Graduation Rate	Fall 2011 Cohort	Reported Grads 2015	FY15 IPEDS Graduation Rate	Fall 2012 Cohort	Reported Grads 2016	FY16 IPEDS Graduation Rate
Eastern Iowa Community Colleges	1,247	281	22.5%	920	254	27.6%	859	253	29.5%
Des Moines Area Community College	2,628	456	17.4%	2,763	562	20.3%	2,501	557	22.3%
Ellsworth Community College	326	70	21.5%	311	58	18.6%	352	87	24.7%
Hawkeye Community College	944	408	43.2%	1,328	373	28.1%	1,065	252	23.7%
Indian Hills Community College	1,116	239	21.4%	892	218	24.4%	914	318	34.8%
Iowa Central Community College	1,159	393	33.9%	1,197	444	37.1%	1,476	474	32.1%
Iowa Lakes Community College	487	196	40.2%	442	210	47.5%	425	184	43.3%
Iowa Western Community College	1,368	243	17.8%	1,409	259	18.4%	1,314	271	20.6%
Kirkwood Community College	3,464	684	19.7%	2,840	617	21.7%	2,475	591	23.9%
Marshalltown Community College	438	106	24.2%	435	79	18.2%	358	84	23.5%
North Iowa Area Community College	738	283	38.3%	704	288	40.9%	617	252	40.8%
Northeast Iowa Community College-Calmar	743	215	28.9%	641	215	33.5%	598	232	38.8%
Northwest Iowa Community College	272	140	51.5%	243	131	53.9%	253	142	56.1%
Southeastern Community College	358	90	25.1%	439	126	28.7%	410	130	31.7%
Southwestern Community College	320	134	41.9%	309	124	40.1%	270	96	35.6%
Western Iowa Tech Community College	333	68	20.4%	687	126	18.3%	581	154	26.5%
Total Iowa Community Colleges	15,941	4,006	25.1%	15,560	4,084	26.2%	14,468	4,077	28.2%
Median Iowa Community Colleges			24.7%			27.8%			30.6%
Black Hawk College	545	102	18.7%	440	91	20.7%	487	131	26.9%
Carl Sandburg College	358	92	25.7%	312	72	23.1%	354	94	26.6%
Highland Community College	399	146	36.6%	350	98	28.0%	360	120	33.3%
Sauk Valley Community College	217	63	29.0%	233	81	34.8%	371	142	38.3%

Shaded values are graduation rates lower than Eastern Iowa Community Colleges' graduation rate.

Appendix A Methodology & Definitions

EICC reports graduation data to the Integrated Postsecondary Education Data System (IPEDS) managed by the U.S. Department of Education in the Spring of each year, as required by the Student Right-to-Know legislation.

Data are collected on the number of students entering the institution as full time, first time, degree/certificate-seeking undergraduate students in a particular year (cohort), by race/ethnicity and gender; this year's cohort began at EICC in the Fall or Summer 2013 term. From that original cohort, the graduation rate is computed by determining the number of students completing a program within 150% of normal time to completion. As a community college, the number completing an award (degree, certificate or diploma) within three years is reported.

Defining the Cohort

The cohort is calculated originally from the Fall 14th Day data.

The cohort included all students who began at EICC in the Fall or Summer 2013 term who attended full time in the Fall 2013 term with no transfer hours. It also included full time students who graduated from high school in 2013 who may have earned credits while jointly enrolled in high school, but EICC was the first postsecondary institution attended after high school graduation.

Degree-seeking was determined by a question on their original, or updated, application for admission. The student must not have indicated on their original application that they were not degree-seeking; the answer to this question must have been Yes or Not Answered.

The original Fall 2013 cohort for EICC included 759 students. The IPEDS adjusted cohort is 757 students (due to the death of two students).

The Fall 2013 cohort included 386 males (50.9% of cohort) and 373 females (49.1% of cohort). Minority students made up 28.2% (214 students) of the cohort; Unknown or Chose Not to Reply student ethnicity made up 2.8% (21 students) of the cohort; Nonresident aliens made up 0.9% of the cohort (7 students) and 68.1% (517 students) of the cohort was made up of white students.

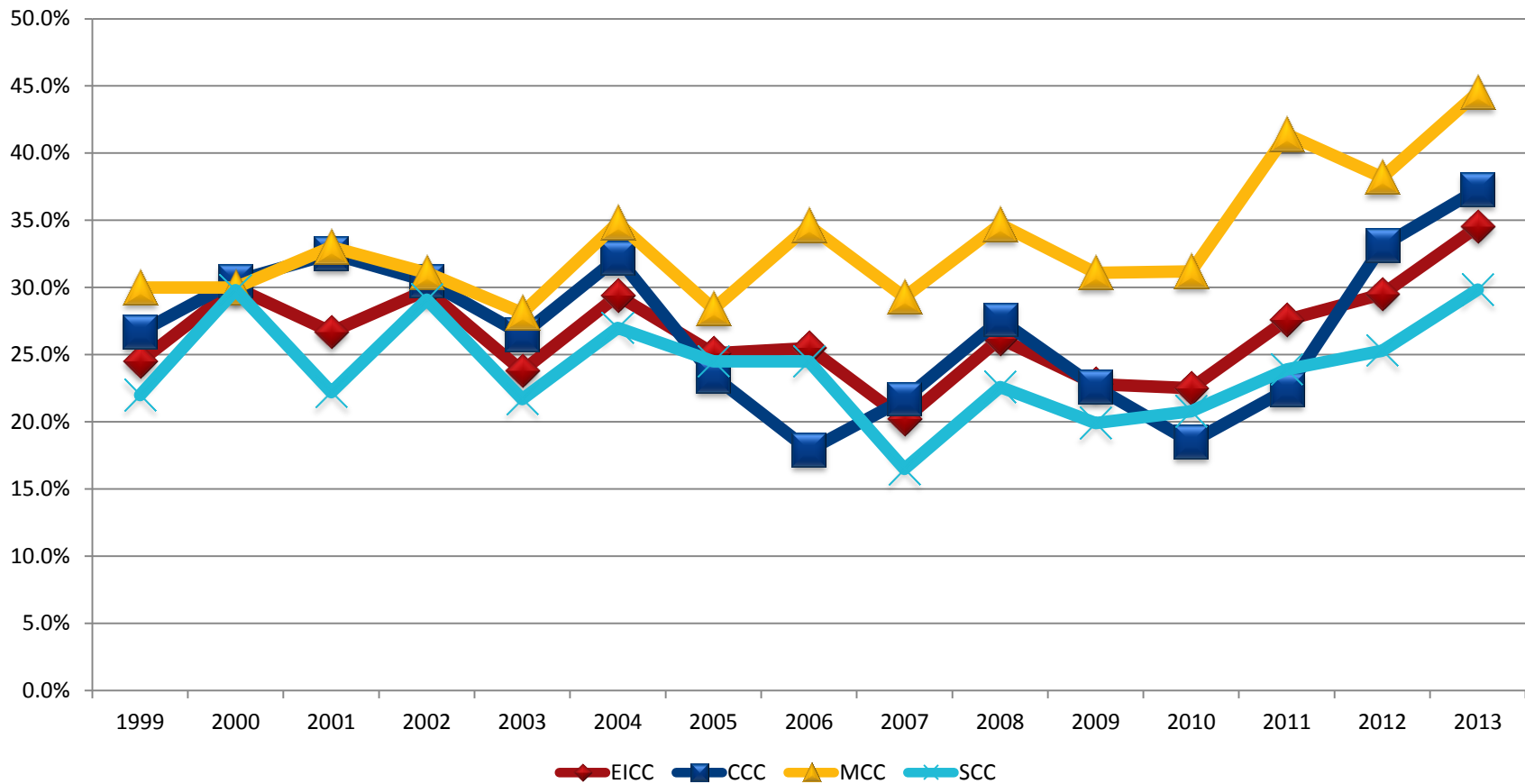
434 students (57.2%) in the cohort graduated from high school in 2013, with 244 of those students (32.1% of cohort; 56.2% of 2013 high school graduates) having attended EICC while still in high school. The remaining 325 students in the cohort (42.8%) did not attend college directly after high school and are tagged "non-traditional" in this report.

Calculating Awards

Academic award data is captured for the academic year on September 10 of each year. Three years academic award files are unioned to create one master academic awards file. The three-year list is then uniqued by student, showing only their highest academic award achieved during the three years.

Appendix B
15-Year History of IPEDS Graduation Rates by College

Cohort Year	1999	2000	2001	2002	2003	2004	2005	2006	2007	2008	2009	2010	2011	2012	2013
EICC	24.5%	30.0%	26.7%	29.8%	23.8%	29.4%	25.1%	25.5%	20.2%	26.2%	22.8%	22.5%	27.6%	29.5%	34.5%
CCC	26.7%	30.5%	32.5%	30.5%	26.5%	32.2%	23.4%	17.9%	21.7%	27.6%	22.6%	18.5%	22.4%	33.1%	37.3%
MCC	30.0%	30.0%	33.0%	31.1%	28.1%	34.8%	28.4%	34.6%	29.3%	34.7%	31.1%	31.2%	41.4%	38.2%	44.5%
SCC	22.0%	29.8%	22.2%	29.1%	21.7%	27.0%	24.5%	24.5%	16.5%	22.6%	19.9%	20.8%	23.9%	25.3%	29.8%



Appendix C Minority Detail Broken Down by College

		IPEDS Graduation Data ¹ Broken Down by College																				
		2013 Cohort				Award 2013-2014 50%				Award 2014-2015 100%				Award 2015-2016 150%				IPEDS Total 150% Grad Rate				EICC Grad
		CCC	MCC	SCC	EICC	CCC	MCC	SCC	EICC	CCC	MCC	SCC	EICC	CCC	MCC	SCC	EICC	CCC	MCC	SCC	EICC	Rate
Males	Native American/ Alaskan Native	0	0	1	1	0	0	0	0	0	0	1	1	0	0	0	0	0	0	1	1	100.0%
	Asian	2	2	5	9	0	2	0	2	0	0	1	1	1	0	1	2	1	2	2	5	55.6%
	Black	12	5	37	54	0	1	2	3	0	0	4	4	1	0	4	5	1	1	10	12	22.2%
	Hawaiian/Pac Islander	0	0	0	0	0	0	0	0	0	0	0	0	0	0	0	0	0	0	0	0	NA
	Hispanic, Any Race	1	19	24	44	0	1	1	2	0	4	4	8	0	2	1	3	0	7	6	13	30.2%
	White	39	57	151	247	3	2	5	10	9	17	31	57	9	9	13	31	21	28	49	98	39.8%
	2 Or More Races	0	3	11	14	0	0	0	0	0	0	1	1	0	1	2	3	0	1	3	4	28.6%
	Chose not to Reply/Unk	0	0	11	11	0	0	0	0	0	0	5	5	0	0	1	1	0	0	6	6	54.5%
	Nonresident Aliens	0	4	2	6	0	0	0	0	0	0	0	0	0	1	0	1	0	1	0	1	16.7%
	Total Males	54	90	242	386	3	6	8	17	9	21	47	77	11	13	22	46	23	40	77	140	36.3%
Females	Native American/ Alaskan Native	0	2	0	2	0	0	0	0	0	1	0	1	0	0	0	0	0	1	0	1	50.0%
	Asian	0	1	5	6	0	1	0	1	0	0	1	1	0	0	3	3	0	1	4	5	83.3%
	Black	4	3	29	36	0	1	1	2	0	0	1	1	0	0	4	4	0	1	6	7	19.4%
	Hawaiian/Pac Islander	0	0	2	2	0	0	0	0	0	0	0	0	0	0	1	1	0	0	1	1	50.0%
	Hispanic, Any Race	3	14	20	37	0	0	0	0	0	4	1	5	1	1	0	2	1	5	1	7	18.9%
	White	54	67	149	270	0	4	7	11	13	27	20	60	6	1	18	25	19	32	45	96	35.6%
	2 Or More Races	0	2	7	9	0	0	1	1	0	0	0	0	0	0	1	1	0	0	2	2	22.2%
	Chose not to Reply/Unk	3	2	5	10	0	0	0	0	1	0	0	1	0	0	1	1	1	0	1	2	20.0%
	Nonresident Aliens	0	1	0	1	0	1	0	1	0	0	0	0	0	0	0	0	0	1	0	1	100.0%
	Total Females	64	92	217	373	0	7	9	16	14	32	23	69	7	2	28	37	21	41	60	122	32.7%
Total Cohort	118	182	459	759	3	13	17	33	23	53	70	146	18	15	50	83	44	81	137	262	37.3%	
Graduation Rate by Year						2.5%	7.1%	3.7%	4.3%	19.5%	29.1%	15.3%	19.2%	15.3%	8.2%	10.9%	10.9%	37.3%	44.5%	29.8%	34.5%	

MCC had two exclusions: one Hispanic male and one white male.

¹ Official data reported in February 2017.

**Appendix D
Minority Breakdown by College**

	CCC			MCC			SCC		
	Cohort	# Grads	Grad Rate	Cohort	# Grads	Grad Rate	Cohort	# Grads	Grad Rate
Entering Fall 2013									
Native American/Alaskan Native	0	0	NA	2	1	50.0%	1	1	100.0%
Asian	2	1	50.0%	3	3	100.0%	10	6	60.0%
Black	16	1	6.3%	8	2	25.0%	66	16	24.2%
Hawaiian/Pac Islander	0	0	NA	0	0	NA	2	1	50.0%
Hispanic, Any Race	4	1	25.0%	33	12	36.4%	44	7	15.9%
White	93	40	43.0%	124	60	48.4%	300	94	31.3%
2 Or More Races	0	0	NA	5	1	20.0%	18	5	27.8%
Choose not to Reply	3	1	33.3%	2	0	0.0%	16	7	43.8%
Nonresident Aliens	0	0	NA	5	2	40.0%	2	0	0.0%
Total	118	44	37.3%	182	81	44.5%	459	137	29.8%

	Cohort	# Grads	Grad Rate	Cohort	# Grads	Grad Rate	Cohort	# Grads	Grad Rate
Entering Fall 2012									
Native American/Alaskan Native	1	0	0.0%	2	0	0.0%	7	2	28.6%
Asian	1	0	0.0%	1	0	0.0%	10	3	30.0%
Black	16	2	12.5%	3	2	66.7%	63	6	9.5%
Hawaiian/Pac Islander	0	0	NA	0	0	NA	2	2	100.0%
Hispanic, Any Race	5	0	0.0%	29	7	24.1%	52	11	21.2%
White	117	44	37.6%	134	54	40.3%	341	83	24.3%
2 Or More Races	0	0	NA	0	0	NA	15	5	33.3%
Choose not to Reply	8	3	37.5%	13	5	38.5%	11	2	18.2%
Nonresident Aliens	0	0	NA	4	3	75.0%	24	19	79.2%
Total	148	49	33.1%	186	71	38.2%	525	133	25.3%

	Cohort	# Grads	Grad Rate	Cohort	# Grads	Grad Rate	Cohort	# Grads	Grad Rate
Entering Fall 2011									
Native American/Alaskan Native	1	1	100.0%	1	0	0.0%	1	0	0.0%
Asian	1	0	0.0%	1	1	100.0%	12	2	16.7%
Black	24	0	0.0%	2	0	0.0%	80	7	8.8%
Hawaiian/Pac Islander	0	0	NA	0	0	NA	4	0	0.0%
Hispanic, Any Race	2	0	0.0%	27	9	33.3%	48	11	22.9%
White	127	33	26.0%	150	63	42.0%	363	100	27.5%
2 Or More Races	0	0	NA	1	1	100.0%	25	4	16.0%
Choose not to Reply	6	2	33.3%	8	4	50.0%	13	7	53.8%
Nonresident Aliens	0	0	NA	20	9	45.0%	3	0	0.0%
Total	161	36	22.4%	210	87	41.4%	549	131	23.9%

	CCC			MCC			SCC		
	Cohort	# Grads	Grad Rate	Cohort	# Grads	Grad Rate	Cohort	# Grads	Grad Rate
Entering Fall 2010									
Native American/Alaskan Native	3	1	33.3%	0	0	NA	4	1	25.0%
Asian	1	0	0.0%	2	0	0.0%	13	1	7.7%
Black	26	2	7.7%	9	0	0.0%	96	5	5.2%
Hawaiian/Pac Islander	0	0	NA	0	0	NA	2	0	0.0%
Hispanic, Any Race	12	1	8.3%	37	9	24.3%	73	9	12.3%
White	199	41	20.6%	200	68	34.0%	484	110	22.7%
2 Or More Races	1	0	0.0%	0	0	NA	19	4	21.1%
Choose not to Reply	6	1	16.7%	9	4	44.4%	19	3	15.8%
Nonresident Aliens	1	0	0.0%	9	2	22.2%	22	19	86.4%
Total	249	46	18.5%	266	83	31.2%	732	152	20.8%

	Cohort	# Grads	Grad Rate	Cohort	# Grads	Grad Rate	Cohort	# Grads	Grad Rate
Entering Fall 2009									
Native American/Alaskan Native	3	1	33.3%	3	2	66.7%	6	1	16.7%
Asian	1	1	100.0%	1	0	0.0%	16	6	37.5%
Black	22	1	4.5%	5	0	0.0%	88	9	10.2%
Hawaiian/Pac Islander	1	0	0.0%	0	0	NA	1	0	0.0%
Hispanic, Any Race	4	1	25.0%	38	9	23.7%	41	8	19.5%
White	178	45	25.3%	191	60	31.4%	516	112	21.7%
2 Or More Races	2	0	0.0%	3	0	0.0%	4	0	0.0%
Choose not to Reply	10	1	10.0%	10	4	40.0%	95	16	16.8%
Nonresident Aliens	0	0	NA	16	8	50.0%	2	1	50.0%
Total	221	50	22.6%	267	83	31.1%	769	153	19.9%

**Appendix E
Gender Breakdown by College**

Entering Fall 2013	CCC			MCC			SCC		
	Cohort	# Grads	Grad Rate	Cohort	# Grads	Grad Rate	Cohort	# Grads	Grad Rate
Male	54	23	42.6%	90	40	44.4%	242	77	31.8%
Female	64	21	32.8%	92	41	44.6%	217	60	27.6%
Total	118	44	37.3%	182	81	44.5%	459	137	29.8%

Entering Fall 2012	Cohort	# Grads	Grad Rate	Cohort	# Grads	Grad Rate	Cohort	# Grads	Grad Rate
Male	64	26	40.6%	97	40	41.2%	230	52	22.6%
Female	84	23	27.4%	89	31	34.8%	295	81	27.5%
Total	148	49	33.1%	186	71	38.2%	525	133	25.3%

Entering Fall 2011	Cohort	# Grads	Grad Rate	Cohort	# Grads	Grad Rate	Cohort	# Grads	Grad Rate
Male	71	13	18.3%	105	40	38.1%	281	66	23.5%
Female	90	23	25.6%	105	47	44.8%	268	65	24.3%
Total	161	36	22.4%	210	87	41.4%	549	131	23.9%

Entering Fall 2010	Cohort	# Grads	Grad Rate	Cohort	# Grads	Grad Rate	Cohort	# Grads	Grad Rate
Male	109	19	17.4%	110	32	29.1%	339	66	19.5%
Female	140	27	19.3%	156	51	32.7%	393	86	21.9%
Total	249	46	18.5%	266	83	31.2%	732	152	20.8%

Entering Fall 2009	Cohort	# Grads	Grad Rate	Cohort	# Grads	Grad Rate	Cohort	# Grads	Grad Rate
Male	99	19	19.2%	118	36	30.5%	381	74	19.4%
Female	122	31	25.4%	149	47	31.5%	388	79	20.4%
Total	221	50	22.6%	267	83	31.1%	769	153	19.9%