

# Invest in Our Students...

*Foundations*

2009 Annual Report  
2010 Scholarship  
Yearbook  
2011 Calendar



**Otávio Hegouet**, a native of Brazil, graduated from Davenport Central High School and registered at Scott Community College in 2000. A very skilled soccer player, Otávio joined the Scott Community College Screaming Eagles Men's Soccer team, and was a part of the team when they won the Division VI Championship.

In 2003, Otávio transferred to the University of Iowa School of Pharmacy where he received his Doctor of Pharmacy Degree. He is currently a pharmacist at Hy-Vee in Cedar Rapids, Iowa.

## Scott Community College Foundation

500 Belmont Road  
Bettendorf, Iowa 52722  
[www.eicc.edu/sccfoundation](http://www.eicc.edu/sccfoundation)



Pharmico

...Invest in  
the Future!

MyPharm

Otávio Hegovet  
Scott Community  
College Student  
2000-2003

(read his story to the left)

Foot Care

The year 2009 was a record year for enrollment, expansion, and support at Scott Community College. As the President of the College and the President of the Scott Community College Foundation Board of Directors, we'd like to thank our faculty, staff, administrators, and friends for continuing to support our students and our mission.

As our enrollment continues to increase, more and more students are looking for ways to help fund their education. Several new donors stepped forward to help by establishing new scholarships in the Culinary Arts, Nursing, Radiology Technology, and Liberal Arts areas. In addition, new and existing donors gifted over \$30,000 to endowments that will assist our students for many years.

Several area organizations and individuals provided grants and donations to the Foundation for specific uses. Those funds were used to purchase new state-of-the-art classroom models and hands-on equipment for several of our educational programs; thus giving our faculty the latest in teaching technology.

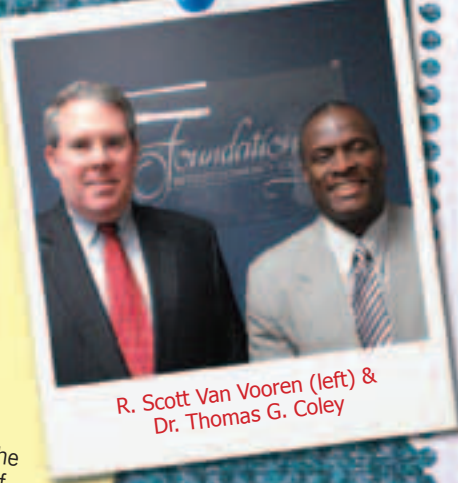
We know that the future will bring many new students to Scott Community College. Our preparations include building a new Physical Sciences wing and expanding our Career & Technical Education building. We invite you to help us prepare by continuing your support and generosity. If you have not yet made the decision to be part of the Scott Community College Foundation, please consider joining us. Feel free to visit one of our campuses to see first-hand how the generosity of our donors have helped our students and faculty.

As always, we continue to be most appreciative of our faculty, staff, administrators, and friends for their generous contributions to the Scott Community College Foundation in support of our students. We will continue to strive to meet the expectations of our donors and our students.

Sincerely,

Dr. Thomas G. Coley, President  
Scott Community College

R. Scott Van Vooren, President  
Scott Community College Foundation



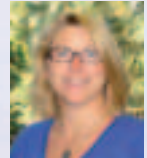
R. Scott Van Vooren (left) &  
Dr. Thomas G. Coley

## 2010 Scholarship Awards

**African-American Faculty & Staff Scholarship**  
Shamonta Williams (not pictured)  
Sonya Wommack (not pictured)

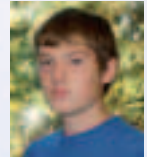
**Alan J. MacDonald Memorial Scholarship**  
Jeremy Hoppe (not pictured)

**American Business Women's Association & SCC Nursing Scholarships**



April Hoover

**Auto Collision Repair Scholarship**



Chandler Dixon

**Bettendorf Noon Rotary Scholarship**  
Jodi Pranschke & Kristina Zellmer  
(not pictured)

# January

Sunday	Monday	Tuesday	Wednesday	Thursday	Friday	Saturday
						1
2	3	4	5	6	7	8
9	10	11	12	13	14	15
16	17	18	19	20	21	22
23/ 30	24 31	25	26	27	28	29

## DECEMBER

			1	2	3	4
5	6	7	8	9	10	11
12	13	14	15	16	17	18
19	20	21	22	23	24	25
26	27	28	29	30	31	

## FEBRUARY

				1	2	3	4	5
6	7	8	9	10	11	12		
13	14	15	16	17	18	19		
20	21	22	23	24	25	26		
27	28							

The Scott Community College Foundation provides resources for scholarships and college enhancements by emphasizing the community college's strengths.

**Scott Community College Foundation**

PH: 563.441.4063

Office Hours:

M-F 8:00 a.m. – 4:30 p.m.

## 2010 Scholarship Awards

### Cameron Family Foundation Nursing Scholarship

Susan Friedrich (not pictured)

### Car Show Scholarship



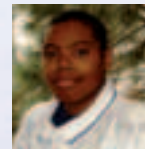
Gloria Garcia Mitchell Matje  
Eddie Block (not pictured)

### Chancellor's Challenge Award & Dean Parsons Environmental Club Scholarships



Craig McDearmon

### Chef Eran Salzmann Culinary Arts Scholarship



William Sharkey



The ALCOA Leadership Award has been presented annually by ALCOA and the Scott Community College Foundation since 1985. Nominees are considered for their contributions to the community, exemplary leadership, and dedication to Scott Community College.

The 2009 ALCOA Leadership award was presented to Duncan Cameron. Duncan has served on the Scott Community College Foundation Board of Directors since 1995 and served as President from 2008 - 2010. Additional board memberships include Bettendorf Library Foundation; WQPT-TV, Moline, IL; Genesis Health; Bettendorf Noon Rotary, and many other organizations and agencies in the Quad Cities.

Pictured are (L-R)  
Dr. Thomas Coley, Scott  
Community College,  
Duncan Cameron, and  
John Riches, ALCOA.

# February

Sunday	Monday	Tuesday	Wednesday	Thursday	Friday	Saturday
		1	2	3	4	5
6	7	8	9	10	11	12
13	14	15	16	17	18	19
20	21	22	23	24	25	26
27	28					

# JANUARY

							1
2	3	4	5	6	7	8	
9	10	11	12	13	14	15	
16	17	18	19	20	21	22	
23/30	24/31	25	26	27	28	29	

# MARCH

							1	2	3	4	5
6	7	8	9	10	11	12					
13	14	15	16	17	18	19					
20	21	22	23	24	25	26					
27	28	29	30	31							

**THANK YOU SCOTT  
COMMUNITY COLLEGE**  
for reshaping our community....



3514 Vine Street  
Davenport, IA 52806  
(563) 388-0004



# March

Sunday	Monday	Tuesday	Wednesday	Thursday	Friday	Saturday
		1	2	3	4	5
6	7	8	9	10	11	12
13	14	15	16	17	18	19
20	21	22	23	24	25	26
27	28	29	30	31		

# FEBRUARY

		1	2	3	4	5
6	7	8	9	10	11	12
13	14	15	16	17	18	19
20	21	22	23	24	25	26
27	28					

# APRIL

					1	2
3	4	5	6	7	8	9
10	11	12	13	14	15	16
17	18	19	20	21	22	23
24	25	26	27	28	29	30

## DID YOU KNOW?

Scott Community College Fall 2010 enrollment was up +8%, or an additional 408 students. However less than 2% of Scott Community College students will receive funding assistance through the Foundation because of limited scholarship funds. Help us, help these students by starting a scholarship today!

## 2009 External Grants & Gifts

American Business Women's  
Association  
Rick & Donna Ahglen  
Ray & Connie Allen  
Kiran Bavikatte Foundation  
Scott & Karen Bennett  
Bettendorf Noon Rotary  
Birdies for Charity  
Cameron Family Foundation  
Cardiovascular Med.  
Sally Paustian & Scott  
Caulpetzer  
Ann Cherowitz  
Community Foundation of the  
Great River Bend  
Kathleen Cunningham  
Sarah Danaher  
Davenport Hospital Ambulance  
Davenport Assoc. Firefighters  
EICCD Foundation  
Bob Gallagher, Sr.  
Area Health Education Center/  
Genesis Quad Cities  
Tim & Rebecca Gimbel  
Hawkeye Paving

Otavio & Courtney Hegouet  
Iowa Cancer Registry Association  
John Deere Foundation  
Judith & Roger Kelly  
Mike & Deanna Kosman  
Dr. David Krien  
Jane & David Lakeman  
Mended Hearts, Chp. 88  
Dr. Harold & Mrs. Linda Miller  
Richard Miller  
Frank & Kara Mitvalsky  
Thomas Myers  
National Active & Retired  
Federal Employees, Chapter 279  
Jerry & Carrie Newton  
Bill & Lisa Northup  
Lois Suiter O'Malley  
Obstetrics & Gynecology  
Specialists  
Dorothy Parsons  
Beau & Rachel Perkins  
Pioneer Hi-Bred  
QC Credit Assoc.  
Rich Quinn

Paul & Janet Rafferty  
Gary Reeher  
Chris & Lisa Riegel  
John & Lisa Rogers  
Ed Sauer  
Jean Schafer  
Mike Schellenberg  
Scott Co. EMS Assoc.  
Scott Co. Fire Chief Assoc.  
Scott Co. Medical Soc. Alliance  
Mike & Molly Sharp  
Bryan & Lisa Sievers  
Linda Silver  
Carol Simmons  
Frank Spies  
Steve & Ann Suiter  
Trinity Health  
Dr. Kathleen Twyner-Coley  
United Neighbors  
US Bank  
Scott & Ellen Van Vooren  
Kay & Wayne Wagner  
Wells Fargo Foundation

## 2010 Scholarship Awards

**Frank & Kara Mitvalsky  
Pre-Law Scholarship**



Sarah Murphy

**Gloria McJunkins Memorial  
Scholarship**

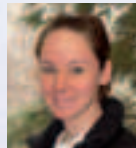


Gabriel DeLa Cerda

**Gregory Huffman Memorial  
Scholarship**

Eddie Block (not pictured)

**Hawkeye Paving Diesel  
Technology & Melissa Davis  
Memorial Scholarships**



Diane Hajny

# April

Sunday	Monday	Tuesday	Wednesday	Thursday	Friday	Saturday
					1	2
3	4	5	6	7	8	9
10	11	12	13	14	15	16
17	18	19	20	21	22	23
24	25	26	27	28	29	30

## MARCH

		1	2	3	4	5
6	7	8	9	10	11	12
13	14	15	16	17	18	19
20	21	22	23	24	25	26
27	28	29	30	31		

## MAY

1	2	3	4	5	6	7
8	9	10	11	12	13	14
15	16	17	18	19	20	21
22	23	24	25	26	27	28
29	30	31				

### DID YOU KNOW?

Scott Community College is not fully tax supported. It is tax assisted, and therefore needs your support. Only 43% of the college's operating funds are provided by state revenues. The balance comes from student tuition, local and federal funding - and private dollars. It is this support from private sources that spells the difference between adequacy and excellence at Scott Community College.

## Enhancing Hands-on Learning Project

Through grants from the Area Health Education Center/Genesis Quad Cities, Community Foundation of the Great River Bend, and the Scott County Medical Society Alliance, Scott Community College was able to purchase new Plastinated organs and organ models for their Biology department.

One of the newest hands-on teaching techniques, plastination involves replacing the fluids in donated body organs with a polymer mixture. This process provides for permanent preservation and keeps the specimens intact, in their natural color, and ready to be handled and studied. Use of the plastinated organs enhances the learning experience as students can now handle a human organ and compare it to what they saw in the animal organ dissection, models, and diagrams. This gives the students a greater appreciation of what the organs truly look like as they don gloves and pick up a brain, heart, lung, or more closely examine a piece of spinal cord or a set of digestive organs. This station always initiates a bit more conversation among students.

The grants also allowed the department to purchase models of enlarged kidney structures, stomach and upper digestive organs, an enlarged ear structure, a giant functional larynx, and female pelvis structure. Students are able to "dissect" the models to better understand function and complexities.



## 2010 Scholarship Awards

### Health Information Technology Scholarship

Ghazala Firdous (not pictured)

### Health, Safety, Environmental & Technology Scholarship

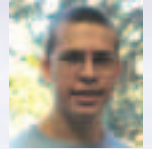
Paul Omasere (not pictured)

### Information Services & AITP Scholarships



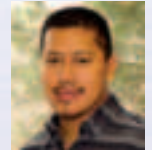
Matthew Peik

### James & Jeralee Mannhardt Scholarship



Kalen Swartz

### Jeff Kosman Memorial Scholarship



Mario Macario

## 2009 Gift-In Kind Donors

Case Construction  
Dennis Walker  
Diane Gere  
Dr. Daniel Hogan, DDS  
Eastern Iowa Community College District  
Eaton Corporation  
Gary Reecher  
Jeremy Gripp

Johnstone Supply  
Ken Hunter  
Lori Ann Brockhouse  
QC Dental Docs  
Republic Companies  
Sherwin-Williams  
Teresa Paper  
Volvo Trucks North America

# May

Sunday	Monday	Tuesday	Wednesday	Thursday	Friday	Saturday
1	2	3	4	5	6	7
8	9	10	11	12	13	14
15	16	17	18	19	20	21
22	23	24	25	26	27	28
29	30	31				

# APRIL

				1	2		
3	4	5	6	7	8	9	
10	11	12	13	14	15	16	
17	18	19	20	21	22	23	
24	25	26	27	28	29	30	

# JUNE

			1	2	3	4	
5	6	7	8	9	10	11	
12	13	14	15	16	17	18	
19	20	21	22	23	24	25	
26	27	28	29	30			

## DID YOU KNOW?

New equipment is continually needed to remain current with workforce needs. In-kind gifts to the Scott Community College Foundation are tax deductible.

A wish list of current needs can be found at:  
[www.eicc.edu/sccfoundation](http://www.eicc.edu/sccfoundation).

# Harry J. & Nellie B. Griffith Memorial Scholarship



Alicia Goddard



Adam Grunewald



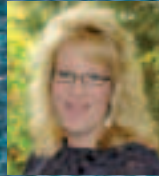
Taylor Hoffman



Amelia Kellner



Darcy King



Donielle McCleery



Joanna Minder



Katie Postel



Brianna Roberson

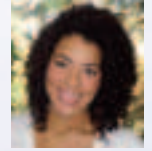
Photos not available:  
Jamie Claussen  
Morgan Janney

...Your scholarship will not only help cover my tuition and book fees, but also give me a personal sense of satisfaction and respect knowing that you are so graciously putting your faith in me. I have worked diligently to maintain a high GPA and solid understanding of all materials covered in my classes, and will continue to do so in semesters to come.

Amelia M. Kellner, Harry J. & Nellie B. Griffith Memorial Scholarship

## 2010 Scholarship Awards

### Jim Hester Memorial Scholarship

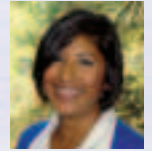


Whitney VanPelt

### John & Mary Blong GED Scholarship

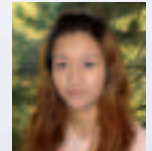
Mary Akins (not pictured)

### Judy Nelson Memorial & SCC Nursing Faculty Scholarships



Amy Bramman

### Judy Nelson Memorial Scholarship



Nhat Truong

# June

Sunday	Monday	Tuesday	Wednesday	Thursday	Friday	Saturday
			1	2	3	4
5	6	7	8	9	10	11
12	13	14	15	16	17	18
19	20	21	22	23	24	25
26	27	28	29	30		

## MAY

1	2	3	4	5	6	7
8	9	10	11	12	13	14
15	16	17	18	19	20	21
22	23	24	25	26	27	28
29	30	31				

## JULY

					1	2
3	4	5	6	7	8	9
10	11	12	13	14	15	16
17	18	19	20	21	22	23
24/31	25	26	27	28	29	30

**LEAVE A LEGACY  
TODAY TO ENSURE A  
BRIGHTER  
TOMORROW...**

Include Scott Community College  
today in your estate plans.  
Learn how at  
[www.eicc.edu/sccfoundation](http://www.eicc.edu/sccfoundation)

## 2010 Stone Opportunity Scholarship

Named after Dr. Lenny Stone, former president of Scott Community College, these scholarships are awarded to graduating high school seniors who are in the upper 25% of their graduating class or have an ACT score of 23 or higher. The Foundation contributes one-half of the tuition rate at time of enrollment towards the student's two-year degree.

*Kristine Adams, Alex Campbell, Brandi Clark, Rachel Costas, Jessica Fisher, Heather Gajeski, Kimberly Huntington, Ariel Hyde, Chelsea Kingsley, Eric Poirier, Jacob Ringsdorf, Brittany Staack, Jacob van Camp, Jonathan Verschoore, Steven Wanda, Benjamin Wiley, Haley York.*

## Scott Community College Blue & White Scholarship

The scholarship is supported by the Scott Community College Student Government to inspire students to become recognized leaders at the college. These scholarships are awarded to graduating high school seniors that are involved in extracurricular activities at their high school and are in the upper half of their graduating class. The Foundation contributes \$500 towards their tuition.

*Christina Gallagher-Quilty, Katherine Greenlee, Allison Guzman, Tyler Mitchel, Kaitlin Pewe, Alyssa Turcsak.*

I would like to express my gratitude in awarding me this very generous scholarship, the very fact that you are supporting me in accomplishing my dream, of finishing my education and becoming a nurse is very humbling and I thank you again for that.

Cheryl Gulash  
Nursing Faculty Scholarship

## 2010 Scholarship Awards

### Kahl Educational Center Scholarship



Michael Myers



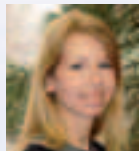
Brandy Brown

### Kiran Bavikatte Foundation Nursing Scholarship



Kim Higby

### Lois Suiter O'Malley Interior Design Scholarship



Michelle Rowe

# July

Sunday	Monday	Tuesday	Wednesday	Thursday	Friday	Saturday
					1	2
3	4	5	6	7	8	9
10	11	12	13	14	15	16
17	18	19	20	21	22	23
24/ 31	25	26	27	28	29	30

## JUNE

			1	2	3	4
5	6	7	8	9	10	11
12	13	14	15	16	17	18
19	20	21	22	23	24	25
26	27	28	29	30		

## AUGUST

							1	2	3	4	5	6
7	8	9	10	11	12	13						
14	15	16	17	18	19	20						
21	22	23	24	25	26	27						
28	29	30	31									

### DID YOU KNOW?

The lack of money is the main reason students withdraw from college, according to national studies. Stop this from happening – start a scholarship for students with financial need at Scott Community College.

Call 563-441-4063

## Lori Walljasper

### 2009 Distinguished Teaching Award, Applied Technologies Division

"I have had the opportunity to visit hundreds of classrooms as a faculty evaluator. I can say, without reservation, that Lori is one of the most talented, creative, and versatile teachers we have at Scott Community College. Lori's natural enthusiasm for her subject matter and, more importantly, for teaching and learning is almost infectious...In truth - Lori's endless efforts to keep her content current, her presentation style flexible, her instructional strategies diverse, and her objectives relevant - are indeed tireless. She is, in my mind, the consummate practitioner - who embraces her discipline, projects a genuine joy for learning, and continually plans for the ongoing success of her students."



## Lillian Phillips

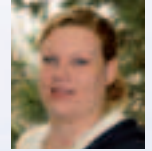
### 2009 Distinguished Teaching Award, Arts & Sciences Division

"Students don't see that they are going to Introduction to Sociology class, they are going to 'Lillian Phillips' class.' When asked how they like that class, they answer 'We love it!' When her students are asked what they are learning, they readily engage anyone nearby with the topic of that day's lecture." Another colleague states, "Lillian has such a sunny disposition. When asked how she is, I often hear, 'Peachy!' and she means it. I don't think there is another Arts & Sciences professor who sees close to 100% of her advisees. They love Lillian and know that she will spend the time to help them find direction for their lives....She knows their names, their strengths, and their problems, and works endlessly to help them reach their goals."



## 2010 Scholarship Awards

### Mary Jean & James Gallagher Scholarship



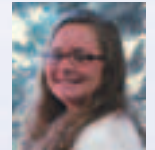
Lisa Chappell

### Mary L. Burbridge Memorial & Non-traditional Student Scholarship



Evanny Henningsen

### National Active & Retired Federal Employees Scholarship



Kristina Niemi

### North Scott Rotary Scholarship

(not pictured)

Iman Daniel and Cecali Kuhl

# August

Sunday	Monday	Tuesday	Wednesday	Thursday	Friday	Saturday
	1	2	3	4	5	6
7	8	9	10	11	12	13
14	15	16	17	18	19	20
21	22	23	24	25	26	27
28	29	30	31			

# JULY

					1	2
3	4	5	6	7	8	9
10	11	12	13	14	15	16
17	18	19	20	21	22	23
24/31	25	26	27	28	29	30

# SEPTEMBER

					1	2	3
4	5	6	7	8	9	10	
11	12	13	14	15	16	17	
18	19	20	21	22	23	24	
25	26	27	28	29	30		

More than 500 students graduate each year from Scott Community College with their General Education Degree (GED). You can help these students transition in to college by supporting a GED scholarship.

**Call 563-441-4063**

## Red Mayo

### 2009 Distinguished Teaching Award for Adjunct Faculty

"Red's classes are never the same from semester-to-semester. He is constantly improving content, equipment, and teaching strategies. He strives toward industry-standard certifications, consistently researches new trends in technology, and is always looking for a new teaching tip that might improve his students' learning. Red uses state-of-the-art hardware and software in his classes (even when the labs are not equipped with these when he starts teaching the class). He incorporates real-world scenarios into his classes in a very application-oriented approach to teaching. One might walk into one of Red's classes and think they were in a computer support technical department instead of a classroom watching students work on labs."



## Jennifer Robb

### 2009 Outstanding Staff Member

"As an advocate for diversity at SCC, Jenn Robb embodies the SCC mission of valuing diversity. She was the initiator and motivator for the 2008 SCC Diversity Fest...She spent countless hours finding out which groups to invite to the Fest, contacting them, planning the event, publicizing it, and evaluating it. She volunteered time to staff a booth at the QC Unity Festival...At the same time she was a very active committee member of the successful EICCD Diversity Conference...Jenn serves on the EICCD Diversity Committee and as a member of the SCC International Education and Student Diversity Committee which is planning the next annual SCC Diversity Fest...Jenn also volunteers for United Way in evaluating agencies that receive their funds. To many people in the Quad Cities, Jenn represents diversity at Scott."



## 2010 Scholarship Awards

### Pacia Sauer Memorial Scholarship



Sherri Batts

### Pathak Memorial Scholarship



Tonya Torres

### Phi Theta Kappa Scholarship



Miranda Mendoza  
Eddie Block (not pictured)

### President's Cabinet Diversity Scholarship Trayantwon Thomas (not pictured)

# September

Sunday	Monday	Tuesday	Wednesday	Thursday	Friday	Saturday
				1	2	3
4	5	6	7	8	9	10
11	12	13	14	15	16	17
18	19	20	21	22	23	24
25	26	27	28	29	30	

# AUGUST

	1	2	3	4	5	6
7	8	9	10	11	12	13
14	15	16	17	18	19	20
21	22	23	24	25	26	27
28	29	30	31			

# OCTOBER

						1
2	3	4	5	6	7	8
9	10	11	12	13	14	15
16	17	18	19	20	21	22
23/3024/31	25	26	27	28	29	

**Scott Community College**  
**KEEP UP THE GOOD WORK!**



2750 Morton Drive,  
East Moline, IL 61244  
Corporate (309)755-0601  
Service (309)762-4000

## 2009 Employee Campaign

Heather Adams  
 Barb Aldape  
 Marlyse Anderson  
 Rhonda Anderson-Paxston  
 Jeff Armstrong  
 Jennifer Aplington  
 Mark Aronson  
 Mary Bailey  
 John Baker  
 Mary Baker  
 Tina Ball  
 Tatiana Ballentine  
 Jan Barkdoll  
 Pam Bass  
 Honey Bedell  
 Candice Beever-England  
 Steve Bergren  
 John Blair  
 Robin Blount  
 Lisa Brown  
 Gary Buckley  
 Tim Burger  
 Andrew Burt  
 Rochelle Carlson  
 Pat Cawiezell  
 Kathy Coiner  
 Wayne Cole  
 Thomas Coley  
 Janet Coogan  
 Tim Cottle  
 Kimberly Darling  
 Nancy Drucker

Nancy Dugan  
 Russ Dunn  
 Alison Entler  
 Barbara Erwin  
 Cindy Flanders  
 Stephen Flanigin  
 Randy Ford  
 Barbara Foster  
 Margo Fox  
 Ruthann Gallagher  
 Bhaswati Gangopadhyay  
 Peg Garrison  
 Sandra Gayman  
 Jim Gekas  
 Angela Ghrist  
 Zeke Gonzalez  
 Barbara Graves  
 Ann Gray  
 Sandra Griffith  
 Jeff Halterman  
 Dawn Hamilton  
 Darrell Hanan  
 Gloria Hanne  
 Kari Hanson  
 Jane Haugland  
 Lysa Hegland  
 Susan Hess  
 Dee Hill  
 Barb Hixon  
 Ken Hoggard  
 Dave Hollingsworth  
 Jeanne Holuba

Tammy Hoover  
 Ann Horan  
 Sherry Horan  
 Ken Hunter  
 Elizabeth Huntley  
 Jonathan Ikoba  
 Jeannine Ingelson  
 Jan Jacobs  
 Janine Johnson  
 Winifred Jones  
 Sue Kahl  
 Pat Keir  
 Sherry Kelly  
 Howard Kietzman  
 Craig Klein  
 Gabe Knight  
 Marysue Knoblauch  
 Leland Kothenbeutel  
 Monica Kurth  
 Roy Lagerblade  
 Gene Lambert  
 Cathy Langdon  
 Rob Lipnick  
 Clara Littig  
 Vickie Logan  
 Georgeann Lucewich  
 Mercedes Luna-Rivero  
 Jill Maine  
 Robert Majchrazk  
 Susan Massick  
 Jeanne Matter  
 Lori Matthew

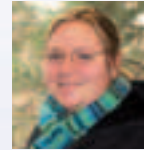
Thomas McAninch  
 Sharon McCubbin  
 Lisa Miller  
 Ken Mirocha  
 Jill Moeller  
 Dan Morgan  
 John Morgan  
 Linda Nelson  
 Stephanie Newell  
 Mark Newman  
 Barb Nichol  
 Gary Olson  
 Teresa Paper  
 Lillian Phillips  
 Sarah Pressly  
 Tom Rathmann  
 Karinda Richard  
 Bill Roba  
 Jennifer Robb  
 Katy Rush  
 John Salter  
 Joy Sayles  
 Wynne Schafer  
 Jim Schneider  
 Anna Schony  
 Dawn Schroeder  
 Brad Scott  
 Mark Shaw  
 Alan Shaw  
 Eileen Shull  
 Erin Snyder  
 Diane Stanley

Donna Starcevic  
 Mary Stavnes  
 Ruth Sueverkruebbe  
 Scott Swanson  
 Ellie Sweet  
 Jamal Tayh  
 Arnie Thode  
 Susan Trudell  
 Mark Ubelhor  
 Nnachi Umennachi  
 Roy VenHorst  
 Jane Voss  
 Dave Vyncke  
 Dick Walker  
 Lori Walljasper  
 Jan Weis  
 Lynn Welch  
 Jerry Wilkerson  
 Andrea Williams  
 Ray Willson  
 LaDrina Wilson  
 Linda Wilson  
 John Wingert

"Thank you to the faculty and staff members who contributed to the internal employee fund drive. Every gift truly makes a difference!"

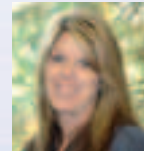
## 2010 Scholarship Awards

### Ray & Connie Allen Scholarship



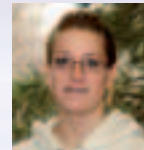
Taylor Hoffman

### SCC Nursing Faculty Scholarship



Cheryl Gulash

### Science Faculty Scholarship



Cheryl Smith

### Shirley Sandman Memorial Scholarship

Emily Allison (not pictured)

# October

Sunday	Monday	Tuesday	Wednesday	Thursday	Friday	Saturday
						1
2	3	4	5	6	7	8
9	10	11	12	13	14	15
16	17	18	19	20	21	22
23/ 30	24/ 31	25	26	27	28	29

## SEPTEMBER

			1	2	3		
4	5	6	7	8	9	10	
11	12	13	14	15	16	17	
18	19	20	21	22	23	24	
25	26	27	28	29	30		

## NOVEMBER

			1	2	3	4	5
6	7	8	9	10	11	12	
13	14	15	16	17	18	19	
20	21	22	23	24	25	26	
27	28	29	30				

A full-time Scott Community College student's costs run approximately \$4,560 per year for tuition, fees and books. Although Scott Community College has one of the lowest tuitions in the State of Iowa, it is beyond the means of many students and families. Help us help them, make a donation to the Scott Community College Foundation today.

# Financial Statement

Scott Community College Foundation  
Statement of Financial Position  
December 31, 2009

## ASSETS

### Current Assets:

Cash and Cash Equivalents	\$ 195,300
Accrued Interest Receivable	2,413
Loans to Students Receivable	9,079
Investments	\$1,392,996

Total Assests \$1,503,925

## LIABILITIES AND NET ASSETS

Liabilities - Accounts Payable \$ 24,510

### Net Assets:

Unrestricted	\$ 192,413
Temporarily Restricted	846,900
Permanently Restricted	535,965

Total Net Assets \$1,575,278

Total Liabilities & Net Assets \$1,599,788

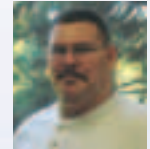
Scott Community College Foundation's financial statements are audited annually by a professional accounting firm.



For the Spring 2010 and Fall 2010 semesters, the Scott Community College Foundation assisted 72 students by awarding 77 donor designated scholarships totaling \$40,325. Overall, the Foundation assisted 123 students with \$85,617 in scholarship dollars for the year.

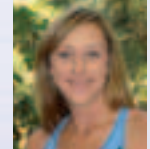
## 2010 Scholarship Awards

### Stewart Health Professional Scholarship



Robert Jackley

### Student Development Scholarship

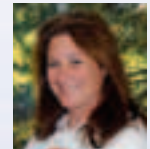


Sarah Hythecker

### Student Involvement Scholarship

Charles Cronk (not pictured)

### TRiO Scholarship



Angela Garvey

...and Thank you for making our dreams come true!

# November

Sunday	Monday	Tuesday	Wednesday	Thursday	Friday	Saturday
		1	2	3	4	5
6	7	8	9	10	11	12
13	14	15	16	17	18	19
20	21	22	23	24	25	26
27	28	29	30			

# OCTOBER

							1
2	3	4	5	6	7	8	
9	10	11	12	13	14	15	
16	17	18	19	20	21	22	
23/30	24/31	25	26	27	28	29	

# DECEMBER

							1	2	3
4	5	6	7	8	9	10			
11	12	13	14	15	16	17			
18	19	20	21	22	23	24			
25	26	27	28	29	30	31			

Debt is significantly increasing in the number of students receiving student loans. Give a student a chance to succeed after college by establishing a scholarship that will support their tuition now enabling them to reduce their debt in the future.

[www.eicc.edu/sccfoundation](http://www.eicc.edu/sccfoundation)

# 2009 BOARD OF DIRECTORS



R. Scott Van Vooren  
**President**



Bill Northup  
**Vice President**



Ray Allen  
**Treasurer**



Linda Miller  
**Secretary**



Duncan Cameron  
**Past President**



Kathleen Cunningham



Lori Freemire



Robert H. Gallagher



Tim Gimbel



Greg Lundgren



Frank Mitvasky



Jerry Newton



Beau Perkins



Paul Rafferty



Mike Sharp



Mary Stewart



Stephen G. Suiter



Kay Wagner

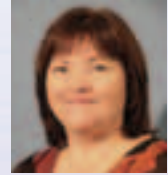


Dr. Thomas Coley  
**SCC President**

Brian Sievers  
(Not Pictured)



Lysa Hegland  
**Asst. to the President/  
Foundation Director**



Lynn Welch  
**Resource  
Development Asst.**

## **Scott Community College Foundation**

500 Belmont Road  
Bettendorf, Iowa 52722

PH: 563.441.4063

[www.eicc.edu/sccfoundation](http://www.eicc.edu/sccfoundation)

Office Hours:

M-F 8:00 a.m. – 4:30 p.m.

# December

Sunday	Monday	Tuesday	Wednesday	Thursday	Friday	Saturday
				1	2	3
4	5	6	7	8	9	10
11	12	13	14	15	16	17
18	19	20	21	22	23	24
25	26	27	28	29	30	31

## NOVEMBER

		1	2	3	4	5
6	7	8	9	10	11	12
13	14	15	16	17	18	19
20	21	22	23	24	25	26
27	28	29	30			

## JANUARY 2012

		1	2	3	4	5	6	7
8	9	10	11	12	13	14		
15	16	17	18	19	20	21		
22	23	24	25	26	27	28		
29	30	31						

Thank you  
Scott Community College for  
paving the road to success for  
so many in our community.

HAWKEYE



PAVING CORP

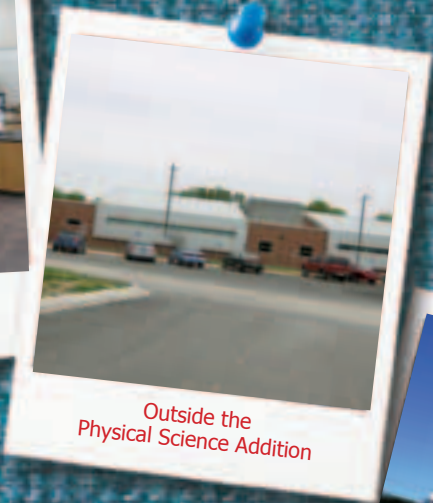
801 42nd Street, Bettendorf, IA 52722  
Telephone: 563-355-6834  
[www.hawkeyepaving.com](http://www.hawkeyepaving.com)



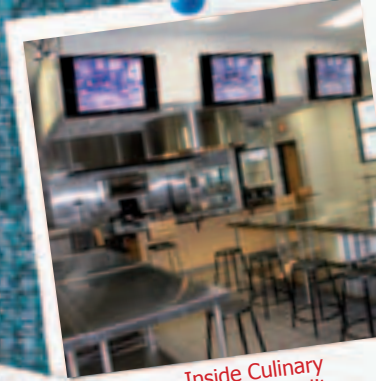
Scott Community College State Street Entrance Sign



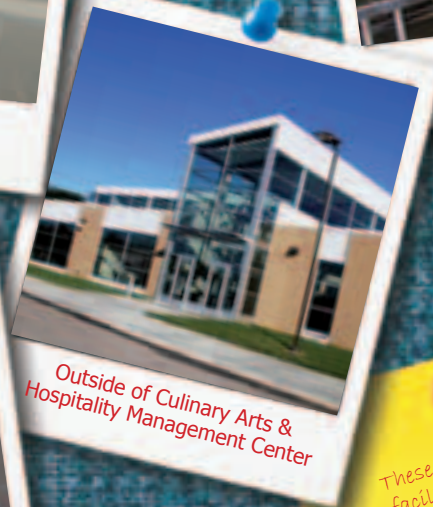
Inside the Physical Science Addition



Outside the Physical Science Addition



Inside Culinary Arts & Hospitality Management Center



Outside of Culinary Arts & Hospitality Management Center



Inside (Left) and Outside Career & Technical Education

These renovations and new facilities were made possible thanks in part to a 2007 bond referendum approved by voters in the Eastern Iowa community College District.  
Thank you!

## Your Support Could Change the Future

### □ Planning What to Give

Surprisingly, there are different tax results from giving different types of property. Consider for example, highly appreciated securities. If stocks have been owned more than one year, then donors can deduct not just their original cost, but also any "paper profit" present in the gift. Best of all, no capital gains taxes are due when you give securities. Real estate, mutual funds and other types of property offer the same advantages. At death, it makes sense to leave "tax-burdened" assets, such as U.S. Savings Bonds and death benefits from retirement accounts to charities, thus allowing heirs to avoid income and death taxes.

### □ Planning How to Give

You might want to join our many friends who have helped the college through bequests - gifts through their wills and living trusts. You also could choose to make a gift that reserves lifetime income to you or a family member. The college would benefit in the same manner as if you had made a bequest, but you would be entitled to charitable deductions and other tax benefits today. You could provide a gift to the college that can be used now, with the remainder passing to loved ones to assist with their future financial security. Or you may prefer the simplicity of an immediate gift of cash or property. By tailoring

the form of your gift to fit your personal situation, you can gain maximum tax rewards, maintain financial security, and make a truly meaningful contribution.

### □ Planning When to Give

Many people plan gifts at year-end to provide important tax deductions. You may find charitable contributions most helpful in years when you have a large influx of taxable income from a bonus, sale of a business or successful investment, or inheritance of taxable assets such as savings bonds or IRAs. As noted above, large deductions are available even if you retain lifetime income from your gift. But the most practical time to make significant gifts may be through your estate plan, by means of a will, living trust or beneficiary designated on a life insurance policy or retirement account. Such gifts are wholly revocable while you are alive and may save significant taxes for your estate.

### □ The Purpose of your Gift

Your support of Scott Community College should be carefully planned to assure your personal satisfaction. Your gift can be established as a memorial to a loved one or special friend. You may want to earmark your gift for a scholarship or particular purpose, or simply say that your gift may be applied wherever the greatest need of the college exists.

*"I wish I could do more."*

Those words accompany so many of the gifts we receive. The truth is that there are dozens of ways for friends of Scott Community College to do more for our future - if gifts are carefully planned. Gift planning is an art that combines financial planning, estate planning and tax planning techniques to enable friends to make gifts of surprising significance, often with dramatic tax and financial rewards.

The need for careful planning becomes clear when people consider the basic questions involved in making an important gift: what should I give; how should I give; when should I give; and are there special purposes my gift should accomplish?

**Consider a bequest.** Gifts through your will can be a particular item, dollar amount, or a percentage of your estate. They can be contingent (passing to the Scott Community College Foundation only if another beneficiary dies before you) or in trust, providing income to your spouse or children.

**Give life insurance.** You can name the Scott Community College Foundation as the beneficiary of a policy on your life or contribute an old policy that you no longer need. Tax savings are excellent.

**Leave bank accounts.** Ask the account manager at your bank or credit union how savings or checking accounts, C.D.'s or other financial accounts can be made payable to Scott Community College upon your death.

**Include us as a beneficiary** of your revocable living trust.

**Leave tax-burdened property.** Your estate can save both income taxes and estate taxes if you make Scott Community College a beneficiary of part or all of your IRA or other retirement account.

## Make a Gift through Your Estate

Most people would like to make their mark on the world - to do something that leaves the earth a better place. Your contributions to our future make a profound statement about your investment in education and our community. Why not continue that support through your estate plan?

### Are any of these planning ideas of interest to you?

We invite you to explore with us the many sides of your own planned giving and the meaning for you, the faculty, staff, and students of Scott Community College. Just detach and send in the Donor Intent Form at the back of this report or contact our office at 563.441.4063.

## Foundation Mission

The Scott Community College Foundation provides resources for scholarships and college enhancement by emphasizing the community college's strengths.

As with every successful organization, our Board of Directors can look at our past with great pride. We have seen tremendous growth in our assets opening the doors for many students to enhance their skills and continue their education. As a contributor, you play an important role in helping the Foundation reach its mission of providing the resources for scholarships and other college opportunities for students.

## Donor Intent Form

Please complete this form and return it in the enclosed self-addressed stamped envelope. We will contact you to discuss your plans further.

\*Name: \_\_\_\_\_

\*Address: \_\_\_\_\_

\*City: \_\_\_\_\_ \*State: \_\_\_\_\_ \*Zip: \_\_\_\_\_

Phone: (    ) \_\_\_\_\_ E-Mail: \_\_\_\_\_

\*Required information

**I would like to be contacted about donating to / establishing a(n):**

- Deserving Student Scholarship
- Annual Scholarship
- Combined Annual / Endowed Scholarship
- Endowed Scholarship

I would like more information on:

- In-kind Donations
- Including Scott Community College in my will
- Planned Giving
- Unrestricted Donations

If you have questions about establishing a scholarship, please do not hesitate to contact our office:

**Scott Community College Foundation**

PH: 563.441.4063

Office Hours: M-F 8:00 AM – 4:30 PM



# How to Establish a Scholarship

Scholarships may be established by philanthropic individuals, companies and service organizations to benefit our students. These scholarships can take on many different forms.

## To begin...

Determine the amount of money you would like to donate and the terms with which you are comfortable. There are four main types of scholarship funds:

- 1. Deserving Student Scholarship** - Contributions can be made in any amount to this scholarship fund. Established by the Scott Community College Foundation Board this general scholarship fund assures access to educational opportunities for students with financial need.
- 2. An Annual Scholarship** - established by donors who wish to contribute a yearly amount (a minimum \$500 per year) with that amount awarded in full during the same year as donated.

**3. Combined Annual/Endowed Scholarship** - established so that scholarships can be awarded immediately while an endowed account is created over a pledge/payment period of several years. (Example: You may give \$1500 annually to the Scott Community College Foundation with \$500 being awarded each year in a scholarship and \$1000 invested in to an account until an endowed scholarship minimum is met).

**4. Endowed Scholarship** - established to honor the memory or celebrate the life of an individual or a corporation desiring to form a partnership with the college to provide a permanent funding base from which scholarships can be awarded. Once the account principal has reached an agreed upon level, annual awards are made from the interest earned.

Donors can set up an endowed scholarship for a minimum of \$10,000 that will allow the gift to live in perpetuity. When an endowment gift is received, it is invested by the Foundation and only a portion of the income (generally 4 to 5%) is used each year to provide assistance to one or more students.

Note: Donations may also be made to existing internal college scholarships. The Foundation Office can help you with this process.

## Then...

Simply mail in your Donor Intent Form to begin working with the Foundation Office on your scholarship. The Foundation staff will help you set up criteria to make sure your scholarship is awarded to the most deserving student(s) and your investment needs are met.

Visit our web site:

[www.eicc.edu/sccfoundation](http://www.eicc.edu/sccfoundation)

